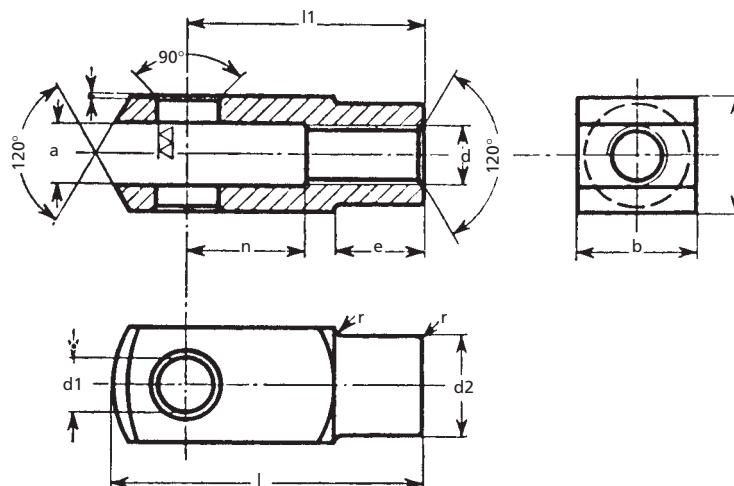




Accessori di regolazione

Forcelle filettate femmina UNI 1676



Materiale:
95 - Mn Pb 23 R 50 kg/mm² - filettatura destra

tipo	a mm	valori della toller. su a (B 12) mm	b mm	d1 mm	valori della toller. su d1 (H8) mm	d2 mm	e mm	f mm	l mm	l1 mm	n mm	r mm
4 MA	4	+ 0.14 + 0.26	8	4	+ 0.030 0	8	6,0	0,5	21	16	8	0,5
5 MA	5	+ 0.14 + 0.26	10	5	+ 0.030 0	9	7,5	0,5	26	20	10	0,5
5 MA x 20												
6 MA	6	+ 0.14 + 0.26	12	6	+ 0.030 0	10	9,0	0,5	31	24	12	0,5
6 MA x 24												
8 MA	8	+ 0.15 + 0.30	16	8	+ 0.036 0	14	12,0	0,5	42	32	16	0,5
8 MA x 32												
10 MA	10	+ 0.15 + 0.30	20	10	+ 0.036 0	18	15,0	0,5	52	40	20	0,5
10 MA x 40												
12 MA	12	+ 0.15 + 0.33	24	12	+ 0.043 0	20	18,0	0,5	62	48	24	0,5
12 MA x 48												
14 MA	14	+ 0.15 + 0.33	27	14	+ 0.043 0	24	23,0	1,0	72	56	27	1,0
16 MA	16	+ 0.15 + 0.33	32	16	+ 0.043 0	26	24,0	1,0	83	64	32	1,0
18 MA	18	+ 0.16 + 0.37	36	18	+ 0.043 0	30	27,0	1,0	94	72	36	1,0
20 MA	20	+ 0.16 + 0.37	40	20	+ 0.052 0	34	30,0	1,0	105	80	40	1,0

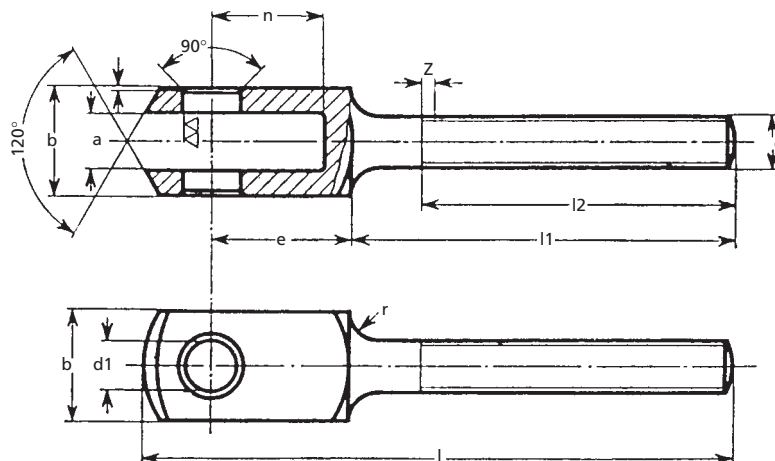
N.B.: A richiesta filettatura sinistra

Dati non impegnativi

Accessori di regolazione

...segue

Forcelle filettate maschio UNI 1675



Materiale:

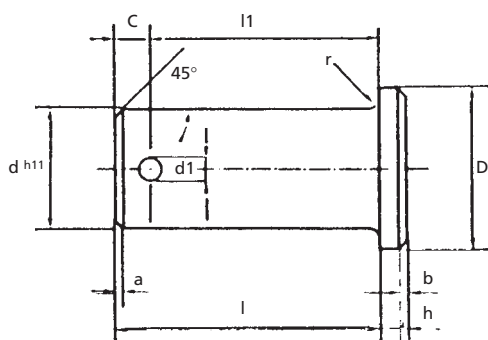
95 Mn Pb R 50 kg/mm².

Disponibile con filetto destro o sinistro.

N.B.: A richiesta - interpellateci per la disponibilità

tipo	a	valori della toller. su a (B 11)	b	d1	valori della toller. su d1 (D10)	e	f	l	l1	l2	n	r
d	mm	mm	mm	mm	mm	mm	mm	mm	mm	mm	mm	mm
M 5	5	+ 0.140 + 0.215	10	5	+ 0.030 + 0.078	12,5	0,5	63,5	45	35	10	2,5
M 6	6	+ 0.140 + 0.215	12	6	+ 0.030 + 0.078	15,0	0,5	72,0	50	40	12	3,0
M 8	8	+ 0.150 + 0.240	16	8	+ 0.040 + 0.098	20,0	0,5	85,0	55	45	16	4,0
M 10	10	+ 0.150 + 0.240	20	10	+ 0.040 + 0.098	25,0	0,5	97,0	60	50	20	5,0
M 12	12	+ 0.150 + 0.260	24	12	+ 0.050 + 0.120	30,0	0,5	109,0	65	55	24	6,0
M 14	14	+ 0.150 + 0.260	27	14	+ 0.050 + 0.120	33,5	1,0	119,5	70	60	27	6,0
M 16	16	+ 0.150 + 0.260	32	16	+ 0.050 + 0.120	40,0	1,0	134,0	75	65	32	8,0

Perni con testa per forcelle UNI 1710



Materiale:

95 - Mn Pb R 50 kg/mm²

Tipo	l	h	a	b	D	r	d1	c	l1
d	mm	mm	mm	mm	mm	mm	mm	mm	mm
4	12	1,5	1,0	0,5	7	0,5	1,5	3,0	9,0
5	14	1,5	1,0	0,5	8	0,5	1,5	3,0	11,0
6	16	1,5	1,0	0,5	9	0,5	2,0	3,0	13,0
8	20	2,0	1,0	0,5	12	0,5	2,0	3,0	17,0
10	25	2,0	1,5	0,5	14	0,5	3,0	3,5	21,5
12	30	3,0	1,5	1,0	16	0,5	3,0	3,5	26,5
14	35	3,0	1,5	1,0	19	1,0	4,0	4,0	31,0
16	40	3,0	1,5	1,0	20	1,0	4,0	4,0	36,0
18	45	4,0	1,5	1,0	22	1,0	4,0	5,0	40,0
20	49	4,0	1,5	1,0	24	1,0	4,0	5,5	43,5

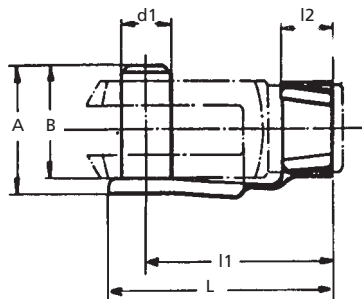
Dati non impegnativi



Accessori di regolazione

...segue

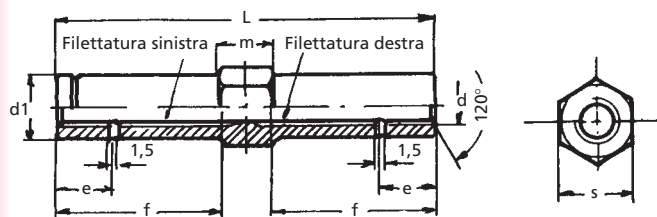
Clips per forcelle UNI 1676



Materiale: 95 - Mn Pb 23 R 50 kg/mm²

Usato per forcella	d1 mm	A mm	B mm	L mm	L1 mm	L2 mm
4 MA	4	11,0	9	19	15	5
5	5	13,5	12	23	19	6
5 MA x 20	5	13,5	12	33	29	6
6 MA	6	16,0	14	28	23	6
6 MA x 24	6	16,0	14	40	35	6
8 MA	8	22,0	18	37	31	8
8 MA x 32	8	22,0	18	53	47	8
10 MA	10	26,0	23	46	39	10
10 MA x 40	10	26,0	23	66	59	10
12 MA	12	27,0	22	55	47	12
12 MA x 48	12	27,0	22	80	71	12
14 MA	14	32,0	30	63	53	14
16 MA	16	38,0	36	75	61	15
20 MA	20	47,0	44	95	77	16

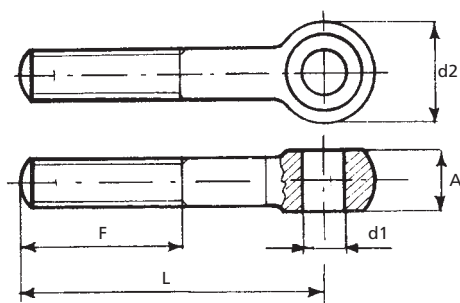
Manicotti di regolazione UNI 1677



Materiale: acciaio PR 80

Tipo	d1 mm	f mm	e mm	L mm	m mm	s mm
5 MA	7,6	29	7,5	65	10	8
6 MA	9,5	30	9,0	70	10	10
8 MA	13,5	35	12,0	80	12	14
10 MA	16,5	40	15,0	90	14	17
12 MA	18,5	45	18,0	100	14	19
14 MA	21,5	50	21,0	110	16	22
16 MA	23,5	55	24,0	120	16	24

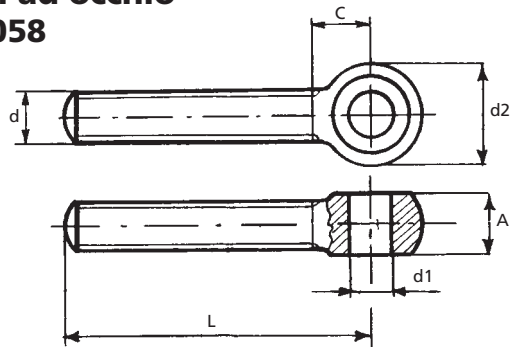
Tiranti ad occhio UNI 2408



Materiale: acciaio A 37.
Disponibili con filetto destro e sinistro.

Tipo	A mm	d1 _{H8} mm	d2 mm	F mm	L mm
6 MA	6	6	16,5	50	100
8 MA	8	8	18,0	50	100
10 MA	10	10	24,0	50	100
12 MA	12	12	27,0	50	100
14 MA	14	14	30,0	50	100
16 MA	16	16	36,0	50	100

Tiranti ad occhio UNI 6058



Materiale: acciaio C40.

Tipo	A mm	d1 _{H8} mm	d2 mm	C mm	L mm
6 MA	7	5	12	8,5	30 - 40 - 50
8 MA	9	6	16	11,1	40 - 50 - 60
10 MA	12	8	20	13,8	40 - 50 - 60 - 70 - 80
12 MA	14	10	24	16,4	50 - 60 - 70 - 80 - 90
14 MA	16	12	28	19,0	60 - 70 - 80 - 90 - 100 - 120
16 MA	18	14	32	21,0	70 - 80 - 90 - 100 - 120 - 140
18 MA	20	16	36	24,2	150
20 MA	22	18	40	26,2	80 - 90 - 100 - 120 - 140 - 160
22 MA	24	18	44	28,2	180
24 MA	26	20	48	31,5	200
27 MA	30	22	54	34,5	220
30 MA	33	25	60	38,8	230

N.B.: Fornibili a richiesta solo con filetto destro e per adeguati quantitativi